



Gliderol Broadline® Commercial Roller Door



Quality and performance at a price you'll appreciate. When a combination of quality and economy in an upward-acting, light-duty commercial door is specified, the new Gliderol® Broadline® continuous curtain door is the ideal answer.

The reasons:

- Simplicity of design reduces costs by eliminating many of the complex working parts necessary in our heavier-duty commercial/industrial rolling metal doors.
- Superior quality materials help make the Gliderol® door last longer and look better than many other continuous curtain metal doors.
- Innovative engineering makes the Gliderol® Broadline® door easy to install, operate and maintain.

The Gliderol® door exemplifies the dedication to engineering excellence that has been built over many years of experience.

The Gliderol® Commercial Door is designed for light commercial applications in buildings and warehouses. Standard doors range from 2.1 - 5.0metres high and 2.0-5.5metres wide. Special sizes can be ordered on application to suit up to 6 x 6m.

Smaller sized Broadline® doors can be operated manually; larger sized models are equipped with either direct-drive, or gear-reduced chain hoists for easier operation. (See Standard Operation Selection Chart and Guide Detail - Page 3).

The benefits are built-in with design features like:

Curtain. The curtain is roll-formed in either 0.4mm zincalume base sheet steel. The deep ribbing created in the roll-forming adds strength, durability and enhances the architectural appearance of the installed door.

The continuous steel curtain reduces the need for interlocking slats commonly employed in the more expensive roller shutter doors, but it operates in the same manner. The curtain coils and uncoils around the counterbalance shaft during operation. Compared to slat-type doors, the Broadline® door is quieter and requires less effort to open and close.

The roller door curtain is weather protected by Gliderol® Rollformed Zincalume base steel sheet panels. Able to withstand the harshest of New Zealand conditions.

Manufactured by
Gliderol Garage Doors NZ

A Division of Gliderol
International Pty Ltd
GST Reg 94 953 847

A New Zealand
Manufacturing Company

12 Cape Hill Road
Pukekohe South
Auckland

Telephone 09 835 0211
Facsimile 09 237 0440

Email sales@gliderol.co.nz
Website www.gliderol.co.nz

Opening doors around the world®

Size for size, the Gliderol® door delivers one of the best windload values of any door in its price range. The strength of the horizontally ribbed curtain, and the stability provided by the deep steel channel guides, results in a superior windload capacity. Full windloading information is provided on the technical data and mounting detail page of this brochure.

Unique Glide Design. The Gliderol® door's unique glide design provides smoother, quieter and easier opening-and-closing operation by eliminating metal-to-metal contact. The glide system employs a self-lubricating polyglide® strip applied to the surface of the curtain.

Door Guides. These are constructed of roll-formed galvanised steel to provide superior strength. The deep channels help maintain the integrity of the door and assure proper alignment. All guides are pre-punched for easy mounting and installation on the specified type wall or jamb.

Brackets. These are constructed of 5mm angle steel welded structural steel angles, and are supplied according to door size.

Counter-balance. Every Gliderol® door size is computer-matched with the proper counterbalance system for spring sizing, tension and strength based on door size.

The counterbalance drum wheels and centre support arm are both self-lubricating nylon, and there are no rollers or hinges to break or wear out.

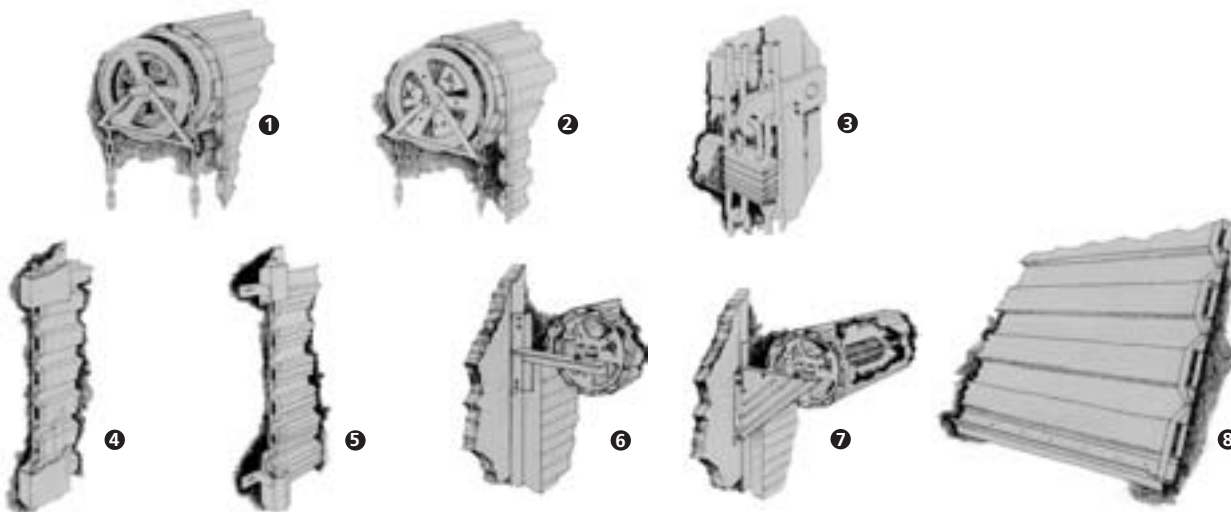
Doors over 3m wide x 3.6m high are furnished with either direct-drive 1:1 ratio or gear-reduced chain hoist drive, depending on the door size (See Standard Operation Selection Chart).

Doors over 3m wide x 3.6m high are not recommended for manual push-up operation.

Chain hoist systems are supplied in left-hand configuration unless otherwise specified. (Viewed inside looking out).

The chain wheel and planetary gears are made of a strong, light-weight, engineered nylon. The planetary gear reduction system is compact and built to exacting tolerances. The chain wheel is designed to self-centre the chain for years of trouble-free operation.

Optional Windlocking. Secure your commercial Roller Door against prevailing winds. Windlock clips fixed to the Commercial Door curtain secure the door in the Guide and ensure strength and security at all times. (Cyclone Rated. Certified 1170-2).



GLIDEROL®
GARAGE DOORS NZ
A Division of Gliderol
International Pty Ltd

A New Zealand
Manufacturing Company

1. Chain Hoist Detail
Gear-Reduced Drive

2. Chain Hoist Detail
Direct Drive

3. Chain Lock Detail

4. Guide Detail for Broadline®
Door with Steel or Wood Jamb

5. Guide Detail for Models GS Doors with
Wood or Masonry Jamb

6. Angle Bracket

7. Computer-Matched Counterbalance

8. Bottom Rail with PVC Weatherseal

Locking Mechanism

For the GC model Commercial Roller Door an interior or exterior Shoot Bolt Lock is provided. This lock can be mounted at any height to suit individual preferences.

On chain-operated Commercial and Standard model doors, an interior chain locking fixture on the door guide is standard.

Bottom Rail

The aluminium bottom rail resists tampering and adds rigidity to the bottom of the door.

Bottom Weatherseal

A PVC bottom seal fits against the floor surface. An optional lintel weatherseal is available on all models.

Mounting System

The Gliderol door can be easily installed on any kind of building surface - wood, masonry, concrete, or steel. Because of its compact design, headroom and side clearance, requirements are minimal.

Your local Gliderol Distributor can provide fully trained experts to handle all installation procedures for you in a minimum amount of time. They can also properly adjust each Gliderol door counterbalance system to the proper tension for the specific on-site requirements.

Architectural Specifications

Gliderol doors shall be Model No: Broadline® (See Model Number Chart) as manufactured by Gliderol Commercial Garage Doors, erected in accordance with Gliderol Commercial Garage Doors' instructions and standards provided by their authorised representative.

Operation shall be chain hoist or push.

Curtain shall consist of roll-formed 0.4 zinalume base steel.

Polyglide strips shall be attached at curtain edges to assure smooth and quiet operation. A continuous aluminium bottom and weatherseal shall be attached to the bottom of the curtain.

Brackets shall be welded structural steel angles, depending on door size.

Counterbalance assembly shall include self-lubricating support rings, upon which the curtain will attach and coil, torsion springs anchored to a continuous steel torsion rod. Springs to be of sufficient size to properly balance door.

Gliderol Garage Doors New Zealand reserves the rights to change product specifications without prior notice.

Limited Warranty

All Gliderol Garage Doors New Zealand products are sold with a one year limited warranty for workmanship, materials and installation by the Distributor of Gliderol Garage Doors. Copies of this limited warranty may be obtained on request from your local Distributor or Gliderol Garage Doors.

The Company reserves the right to make changes or improvements to the products or accessories without notice and without incurring any obligation to make similar changes or improvements to goods previously ordered.

Technical Data and Mounting Details

Model Number Chart

Description	Operation	Specify Model No.:
Interior face mounted, commercial model	Push-up manual	GCM
Interior face mounted, commercial model	Chain hoist (direct drive)	GCD
Interior face mounted, commercial model	Chain hoist (reduction drive)	GCR

Windload Capacity Chart

Model Broadline®		
Opening Width	Wind Load* (Kgm ²)	Wind Speed (Km)
2400	1.5 kgm ²	189 km
3000	0.93 kgm ²	151 km
3600	0.63 kgm ²	127 km
4200	0.5 kgm ²	109 km
4800	0.38 kgm ²	94 km
5400	0.29 kgm ²	86 km

* Based on Steel Jamb Mounting

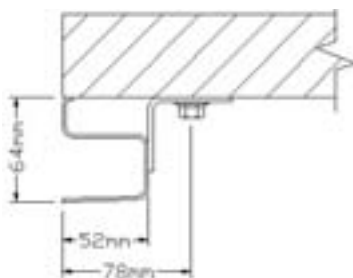
Standard Operation Selection Chart

6000					Consult Engr.
5400					
4200					
3600					
3000					
2400					
Opening Width	2400	3000	3600	4200	5400
	Opening Height				

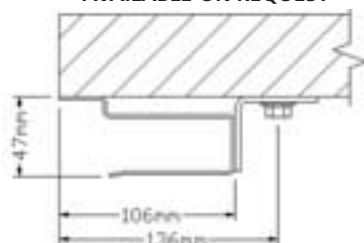
Push-Up Operation
 Hand Chain Direct Drive
 Hand Chain Reduced Drive

Opening Heights	A	B
2100 to 2400	460mm	460mm
2400 to 3000	485mm	485mm
3000 to 3600	520mm	520mm
3600 to 4200	540mm	540mm
4200 to 5000	560mm	560mm
DoorType - Operation (50mm Guide)	C	D (Chain side)
Standard - Push up	125mm	125mm
Standard - Direct Chain	125mm	250mm
Standard - Reduced Chain	125mm	250mm
DoorType - Operation (50mm Guide)	C	D (Chain side)
Commercial - Push up	280mm	280mm
Commercial - Direct Chain	280mm	360mm
Commercial - Reduced Chain	280mm	360mm

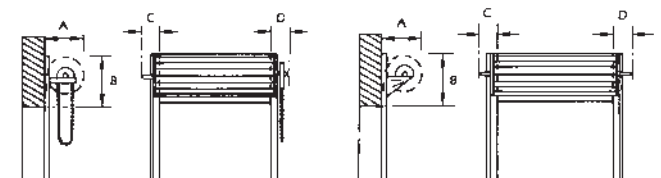
STANDARD 50mm GUIDE SECTION



OPTIONAL 100mm GUIDE SECTION AVAILABLE ON REQUEST



Interior Face Mounted



Glidermatic GRD™

Commercial Roller Door Opener

The **Glidermatic™** has been tested by the Underwriters Laboratory and has been patented worldwide.

The **Glidermatic™** operator's quality and dependability have been thoroughly tested and successfully proven with nearly twenty years of service in actual field use.

Drive Unit 1/3 HP DC Motor(s) are fixed to an end drum wheel and have special gear heads that project into and mesh with the main planetary gear housing which remains stationary for motor operation.

The drive force of the motor gear head rotates the motor(s), along with the drum wheel and door curtain, around the fixed planetary gear.

Door travel is controlled by open and close limit switches which are actuated by cam gears that are completely adjustable to suit door height. Easy access is provided. See detail A.

Diagram below right: **Glidermatic GRD™** features:

1. Drive Unit 1/3 HP DC motor(s)
2. Gear heads
3. Planetary gear housing
4. Drum wheel
5. Open and close limit switches
6. Cam gears
7. Emergency chain hoist
8. Plunger
9. Cut-out switch

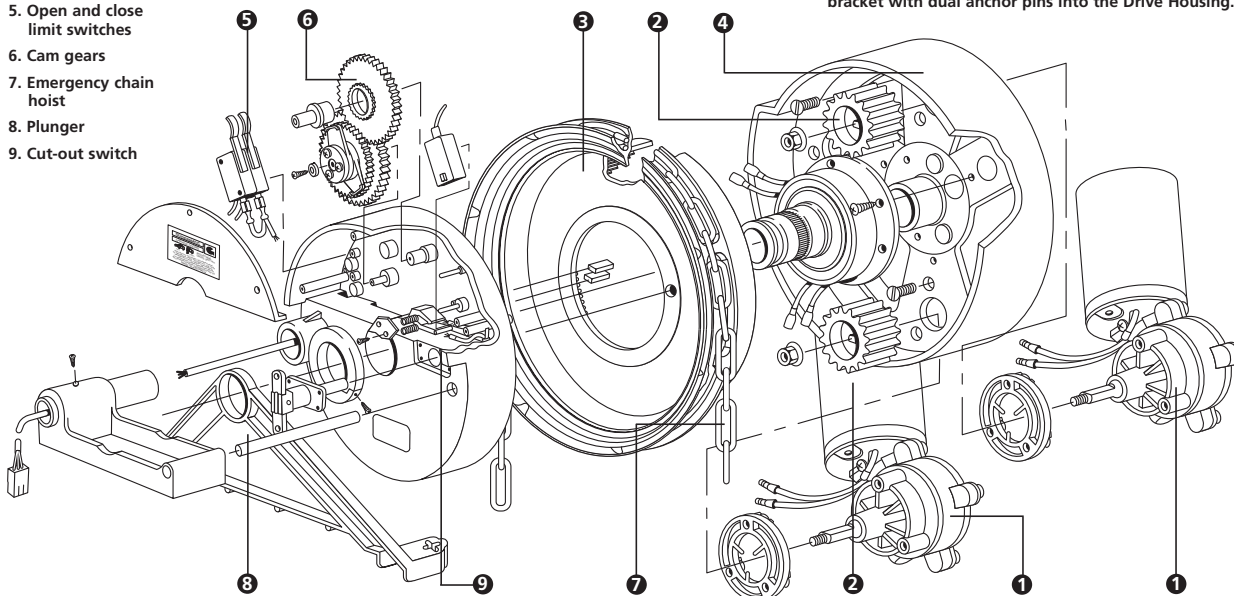
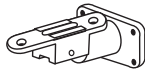
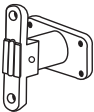


Diagram below: **Glidermatic GRD™** Red Pin Handle



Manual Operation



Glidermatic™

Door travel limit switch settings are not disturbed if door is switched to chain hoist operation, since the cam gears are rotated only by the actual travel of the door curtain. Settings are not lost during power failure either.

Emergency Chain Hoist is moulded as part of the main planetary gear housing. In case of power failure, a simple lever action withdraws a plunger from the main planetary gear which then makes it connect directly to the coil of the door, which can now be operated by the chain hoist.

A cut-out switch deactivates all power to the motor(s) while the lever is set to chain hoist operation.

Control Box is a fully insulated enclosure that contains the logic circuitry which includes overload protection. A three station push button with UP-DOWN-STOP is furnished in the control box as standard.

Miminal Field Installation is required for the control box and push button station, which is wall mounted in close proximity to the door.

Authorised Distributor



Detail A: End view of Drive Unit with access cover removed showing limit switches, cam gears and cut out switch. Also shown is the Manual emergency disconnect lever and the anchor block attached to wall bracket with dual anchor pins into the Drive Housing.



Detail B: Interior view of Dual 1/3 HP DC motors inside the coil of the door. Also shown is the chain hoist sheave which accepts welded chain and the chain guide.

Australian Offices
International Manufacturers and Licensees

New Zealand
Gliderol Garage Doors NZ
12 Cape Hill Road
Pukekohe South Auckland
Telephone: 09 835 0211
Facsimile: 09 237 0440

South Island
261 Annex Road
Christchurch
Telephone: 03 341 0913
Facsimile: 03 341 6985

Head Office
South Australia
Gliderol Garage Doors
32 Jacobsen Crescent
Holden Hill SA 5088
Telephone: (08) 8261 9633
Facsimile: (08) 8266 4712

Southern Office
1 Bredbo St.
Lonsdale South Australia 5160
Telephone: (08) 8186 4040
Facsimile: (08) 8266 4712

New South Wales
Manufacturing Complex
45 Sammut Street
Smithfield NSW 2164
Telephone: (02) 9725 1033
Facsimile: (02) 9725 1115

Sales Office & Showroom
3a Alexander Street
Auburn NSW 2144
Telephone: (02) 9644 6533
Facsimile: (02) 9644 6544

Newcastle
Unit 2-87 Glenwood Drive
Thornton NSW 2322
Telephone: (02) 4966 8500
Facsimile: (02) 4966 8511

Wollongong
Unit 2-1 Luso Drive
Unanderra NSW 2526
Telephone: (02) 4272 3220
Facsimile: (02) 4272 3084

Queensland
45 Harvey Street
Eagle Farm QLD 4009
Telephone: (07) 3868 2766
Facsimile: (07) 3868 2760

Victoria
23 Kitchen Road
Dandenong VIC 3175
Telephone: (03) 9793 5455
Facsimile: (03) 9706 8492

Western Australia
Perth
21 Prindville Drive
Wangara WA 6065
Telephone: (08) 9409 3000
Facsimile: (08) 9409 3200

Bunbury
Unit 4, 31 Denning Road
Bunbury, WA, 6230
Telephone: (08) 9721 7600
Facsimile: (08) 9721 7600

Tasmania
Gliderol Garage Doors Pty Ltd
C/o 23 Kitchen Road
Dandenong VIC 3175
Telephone: (03) 9793 5455
Facsimile: (03) 9706 8492

United Kingdom
Gliderol Roller Doors Ltd
Davy Drive
North West Industrial Estate
Peterlee, County Durham SR8 2JF, UK
Telephone: +44 191 518 0455
Facsimile: +44 191 518 0548

Singapore
Gliderol Doors (S) Pte Ltd
No 86 International Road
Singapore 629176
Telephone: 65 266 6668
Facsimile: 65 266 6866

United States
Gliderol International
Jim Pace
2317 Ridgewood Drive
Plano, Texas 75074
Telephone: 1 972 423 9075
Facsimile: 1 972 423 8735
Email: Jamespace@excite.com

Saudi Arabia
Al-Moosa Garage Doors
Al Hassa, Dhahran Street
PO Box 10070 Pin Code 31982
Telephone: (03) 966 3 587 3660
Facsimile: (03) 966 3 587 8050

Bahrain
Abbas Bijeek & Sons
PO Box 308
Manama, Bahrain
Telephone: +973 17 401 555
Facsimile: +973 401 333

United Arab Emirates
ADESCO
PO Box 43217, Abu Dhabi
United Arab Emirates
Telephone: 9712-393 915
Facsimile: 9712-393 965

Al Adrani & Partners
Electronic Doors
PO Box 1510
Doha, Qatar
Telephone: 974 4884 340
Facsimile: 974 4884 336

India
Indo-Germa Products Ltd
No 14 Pattulool Road
Chennai 600 002
India
Telephone: +91 44 2 852 0075
Facsimile: +91 44 2 852 0047

Thailand
Gliderol Doors (Thai) Co. Ltd
24/32 Moo 6, Bangna-Trad Road,
Bangsoethong, Smtprakam 10540
Thailand
Telephone: (662) 740 02313
Facsimile: (662) 740 0235



GLIDEROL®
GARAGE DOORS NZ
A Division of Gliderol
International Pty Ltd

A New Zealand
Manufacturing Company

Glidermatic GRD™
Industrial Roller Door Opener
Using technology smarter.